



The Child Health Network for the Greater Toronto Area

Niday Perinatal Database Project

Fact Sheet #2 – February 2003

Second Training Session Held



A second training session to explore issues related to implementation of the Niday Perinatal Database across the CHN was held on January 22, 2003.

The objectives of the workshop were:

- i. *To receive an update from all organizations concerning progress related to implementation of the database and to identify obstacles impacting on implementation.*
- ii. *To receive training on data analysis and reporting.*
- iii. *To explore the kinds of indicators and reports that CHN members would like generated from the regional database.*

For questions about implementing the database contact:

Ann Mitchell, Perinatal Coordinator, PPESO

Tel: 613-549-6666 x.4960 or E-mail: mitchela@kgh.kari.net

For questions or input into data analysis and reporting for the CHN contact:

Wil Ng, Epidemiologist, Toronto Public Health Unit

Tel: 416-338-8077 or E-mail: wng2@toronto.ca

For questions about the CritiCall screen or uploading data contact:

Trish Simmons, Project Specialist

Tel: 905-575-6263 Email: simmonst@hhsc.ca

Hiring of Project Manager

The CHN will be recruiting a full-time project manager to oversee the implementation of the Niday Perinatal Database. Interviews for the position were conducted during the first week in February. The Project Manager will oversee implementation of the database across the network. He/she will be responsible for working with member organizations and project collaborators (i.e., PPESO, CritiCall, Public Health, CEHIP, and the Ministry) to:

- *Manage planning and policy issues arising from implementation of the database;*
- *Develop implementation of standards for data collection, storage, analysis, interpretation and reporting; and*
- *Enhance the database through development of additional system indicators*

The CHN is also pleased that the Halton, Peel, York, Durham and Toronto Health Units have agreed to work with the network during the first year of implementation of the Niday database.

Timelines & Milestones

Pending hiring of the Project Manager, Ann Mitchell, PPESO staff, is

Working with CHN hospitals to facilitate implementation of the database across the network. Ann will be visiting a number of hospitals in early February to help them expedite implementation of the database. As of January 22, 2003, the following hospitals had already started entering data into the Niday Database: Credit Valley, Halton, Lakeridge, St. Joseph's, Trillium. Several hospitals are planning to upload data from their existing databases including: Humber River, Mount Sinai, North York General, St. Michael's, Sunnybrook and Women's, Toronto East General, William Osler, York Central. A number of these organizations have agreed to enter data directly into the Niday database in the short-term. **All sites uploading data are reminded that they must do so no later than two weeks post month end (e.g., for January 31st month end, data must be uploaded by February 15th).**

While a few sites have yet to confirm their plans or timelines for implementation of the database, all CHN members have committed to working toward the final "go live" date of March 1, 2003 for full database implementation.

DATA ANALYSIS & REPORT OPTIONS: Looking ahead

Types of reports

Frequency Reports

Comparison Reports

Raw Data Reports

Annual Reports

Approach to analysis for CHN

Analysis by Health Unit ("Health Unit" refers to health unit of mother's residence)

Analyses by level of care (Level I, II, II+, III)

Analysis by cluster (North, West, East, Central)

Kinds of indicators to be tracked

- ✓ Number & place of births
- Characteristics of women
- ✓ Characteristics of births (e.g., low birthweight, preterm)
- ✓ "Appropriate" Place of Birth
- ✓ Stillbirth and Infant Mortality
- ✓ Cigarette smoking
- ✓ Breast-feeding
- ✓ Labour and Delivery (e.g., labour induction, fetal monitoring, cord gases)



Types of Reports

FREQUENCY REPORTS:

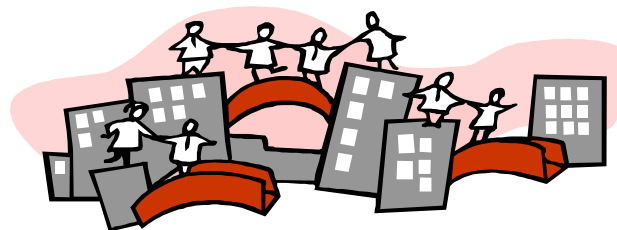
- ✓ used to generate reports on any indicators for your organization, usually used to answer a question
- ✓ can be run at any time during the data entry cycle
- ✓ time period: 1 day or more

COMPARISON REPORTS:

- ✓ used to compare your organization to other groups of organizations
- ✓ similar format to frequency reports
- ✓ can only be done when all hospitals in comparison group have "closed" their data entry for time period
- ✓ time period: 1 day or more, but usually compare on monthly cycle

RAW DATA REPORTS:

- ✓ used to access raw data from your organization only
- ✓ reports can be generated at any time



Future directions & plans:

The CHN will be working with staff at PPESO to: Enhance report options - Develop a neonatal module - Develop a provincial reporting format to allow for comparisons across regions - Establish a cycle for making database revisions

The CHN will be working with Toronto Public Health and other GTA Health Units to: Prepare the first annual report – Review and confirm issues related to data quality and management.

Thank you ... Together, we are making a difference!